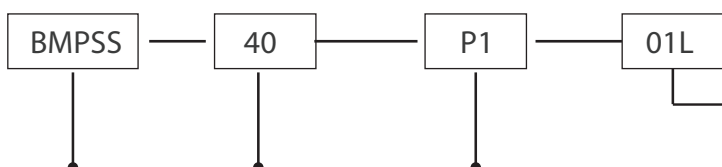


Codification:



Series	Size	Socket*Body Material
^P1		Black POM
P2		White POM
P3		Grey PP
^A1		Black aluminum alloy
A2		Silver aluminum alloy

^ means : Default choice

Rubber sleeve material & Working temperature		
01	Natural rubber	-10~70°C
01HS	High tear resistance natural rubber	
^01L	High resilience natural rubber	
01FB	Food grade black NR	
01FW	Food grade white NR	
01C	Conductive NR	-20~110°C
01S	Free of silicon NR	
02	EPDM	
02FB	Food grade black EPDM	-40~150°C
02FW	Food grade white EPDM	
03	Silicon rubber	-10~130°C
03F	Food grade silicon rubber	
04	Viton	-10~80°C
05	NBR	
05H	HNBR	

Technical specification:

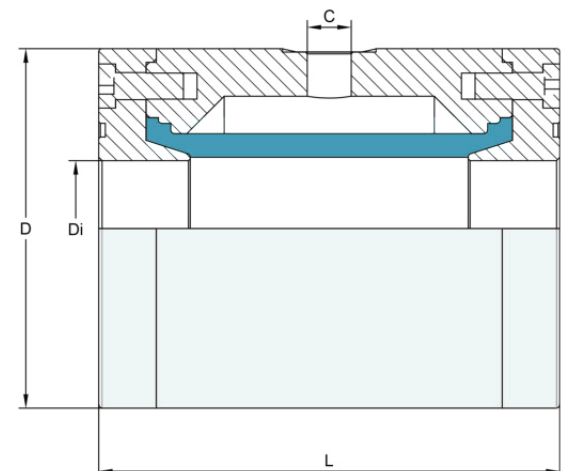
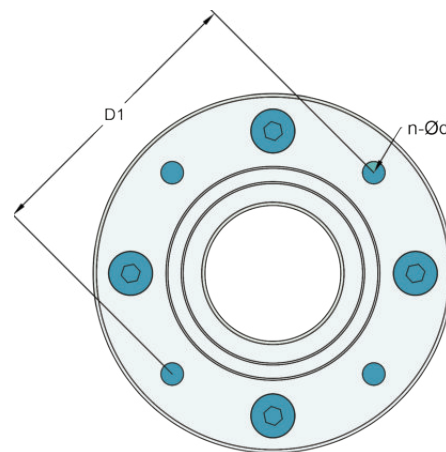
Features	
Design	Pneumatically actuated pinch valve
Sealing principle	Elastic lip seal
Mounting position	Any
Type of mounting	In-line installation
Direction of flow	Reversible
Valve function	2/2 way,normally open
Reset method	Rebound resilience
Nominal pressure	PN10
Sleeve feature	Replaceable



Technical data	
Housing	Aluminum alloy, POM, PP
Socket	Aluminum alloy, POM, PP
Seal or sleeve	Natural rubber,EPDM,NBR,HNBR,VITON.....
Control pressure [bar]	Less than 8 bar
Medium pressure [bar]	0.....6
Pressure difference [bar]	2.....3
Optimum control pressure	Medium pressure+Pressure difference

Advantage		
* Compact design	* Free passage	* No plugging
* 100% shut off	* Easy maintenance	* Anti-abrasive
* Food grade	* Anti-corrosive	* Quick open-close

Application
For Pneumatic convey industry
* Powder industry: granual, epoxy painting, glass,plastic
* Chemical industry: acid,fuel,liquid,fertilizer
* Food industry: syrup, ice cream, milk,liquid food
* Others: cable, dust, salt, water,slurry,waste,sludge



DN (mm)	Di (mm)	D (mm)	L (mm)	D1 (mm)	C	n-φD	O ring	Vol.l	POM KG Weight
32	32	82	105	67	G 1/4"	4-M6	48*φ2.5	0.12	0.6
40	40	98	120	82	G 1/4"	4-M6	58*φ3	0.2	0.9
50	50	130	135	102	G 1/4"	4-M8	75*φ5	0.3	1.3